

# 60th Presidential Inauguration

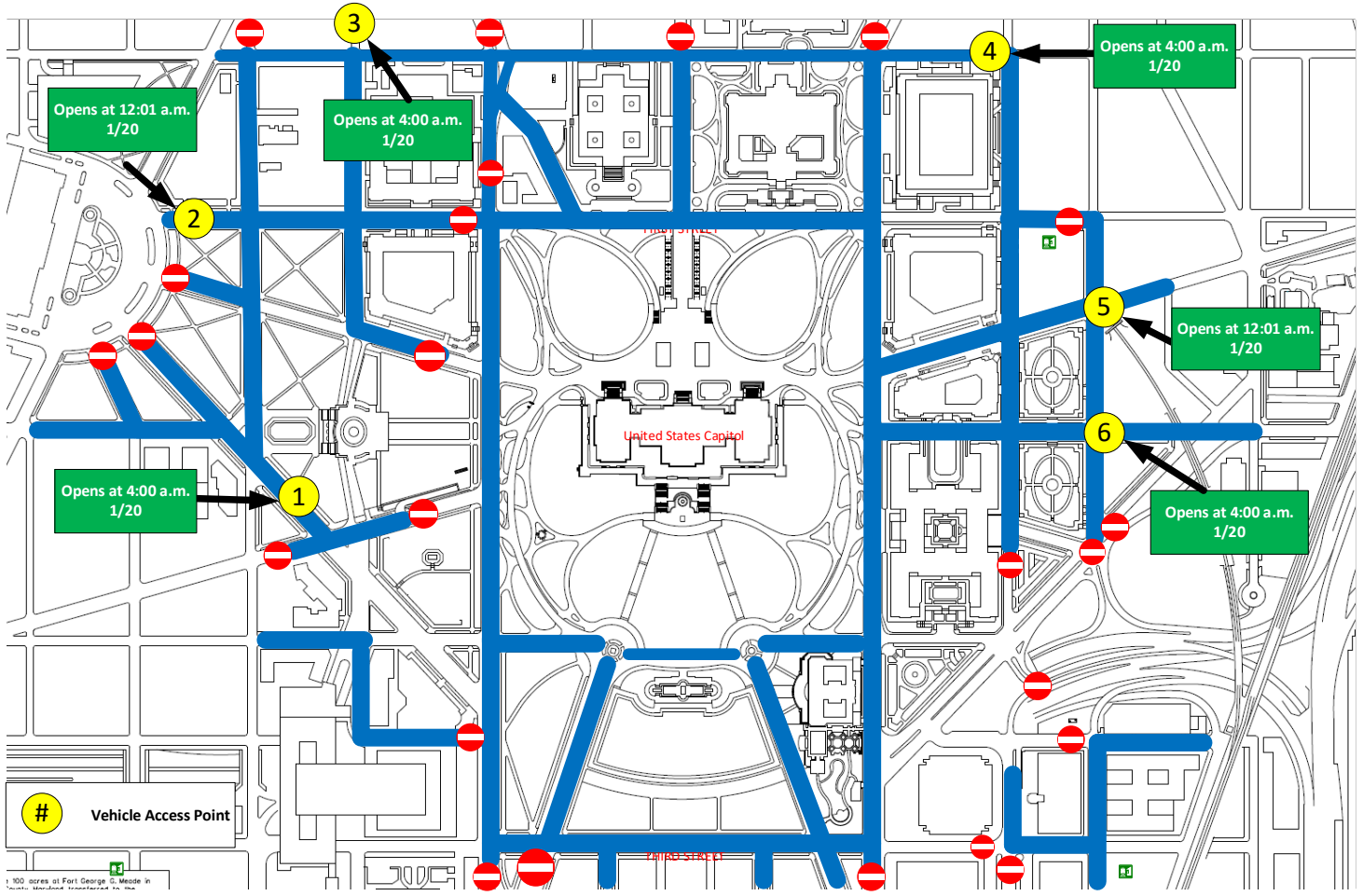
## January 20, 2025



### Routes to USCP Vehicle Access Points (VAP)

Effective: **11:00 P.M. on 1/19/25** through **8:00 P.M. on 1/20/25**

## OVERVIEW MAP of VEHICLE ACCESS POINTS



### **LAW ENFORCEMENT WILL INSPECT AND SECURITY SWEEP ALL VEHICLES.**

- Metropolitan Police Department and National Guard Checkpoints: Show Congressional ID, driver's license, and state where you are going and why.
- USCP Checkpoints: Congressional ID and current House/Senate parking sticker required for access.

#### SENATE SIDE VEHICLE ACCESS POINTS

#### HOUSE SIDE VEHICLE ACCESS POINTS

1. Louisiana Ave., NW at D St., NW
2. First St., NE at Columbus Circle, NE
3. C St., NE at Second St., NE

4. C St, SE at Second St., SE (**Library Side**)
5. New Jersey Ave., SE at D St., SE
6. South Capitol St., SE/SW at D St., SE/SW

# 60th Presidential Inauguration

January 20, 2025



## Routes to USCP Vehicle Access Points

Effective: **11:00 P.M. on 1/19/25** through **8:00 P.M. on 1/20/25**

### SENATE Vehicle Access Point: **From Baltimore-Washington Parkway South**

#### Vehicle Access Point: **#1 - Louisiana Ave., NW at D St., NW**

- From Baltimore-Washington Parkway Southbound
- **RIGHT** 2 Lanes onto US-50 WEST (New York Ave)
- **LEFT** onto Bladensburg Road, NE (Traffic Signal / Exxon Station)
- **BEAR RIGHT** onto Maryland Ave., NE (Follow to Stanton Park- See Map)
- **STRAIGHT** onto C St., NE
- **STRAIGHT** onto Massachusetts Ave., NE (Follow all the way across Union Station)
- **LEFT** onto North Capitol St., NW
- **RIGHT** onto Louisiana Ave., NW

Vehicle Access point is Louisiana Ave., NW when you cross over D St., NW.

#### NOTES:

- Please follow the instruction of law enforcement and military personnel as you get closer to the U.S. Capitol for additional direction.
- Please have your staff ID readily available and ensure your vehicle has the required parking permit.
- Please allow additional travel time due to the anticipated volume of attendees for this historic event.
- Additional road closures possible due to safety concerns.



# 60th Presidential Inauguration

January 20, 2025

## Routes to Vehicle Access Points (VAP)



### SENATE Vehicle Access Point: **From Baltimore-Washington Parkway South**

#### Vehicle Access Point: # 2 - First St., NE at Columbus Circle, NE

- From Baltimore-Washington Parkway Southbound
- **RIGHT** 2 Lanes onto US-50 WEST (New York Ave)
- **LEFT** onto Bladensburg Road, NE (Traffic Signal / Exxon Station)
- **BEAR RIGHT** onto Maryland Ave., NE (Follow to Stanton Park- See Map)
- **STRAIGHT** onto C St., NE
- **STRAIGHT** onto Massachusetts Ave., NE
- **LEFT** onto First St., NE

Vehicle Access point is at the corner First and Columbus St., NE.

#### NOTES:

- Please follow the instruction of law enforcement and military personnel as you get closer to the U.S. Capitol for additional direction.
- Please have your staff ID readily available and ensure your vehicle has the required parking permit.
- Please allow additional travel time due to the anticipated volume of attendees for this historic event.
- Additional road closures possible due to safety concerns.



# 60th Presidential Inauguration

January 20, 2025

## Routes to Vehicle Access Points (VAP)



### SENATE Vehicle Access Point: **From Baltimore-Washington Parkway South**

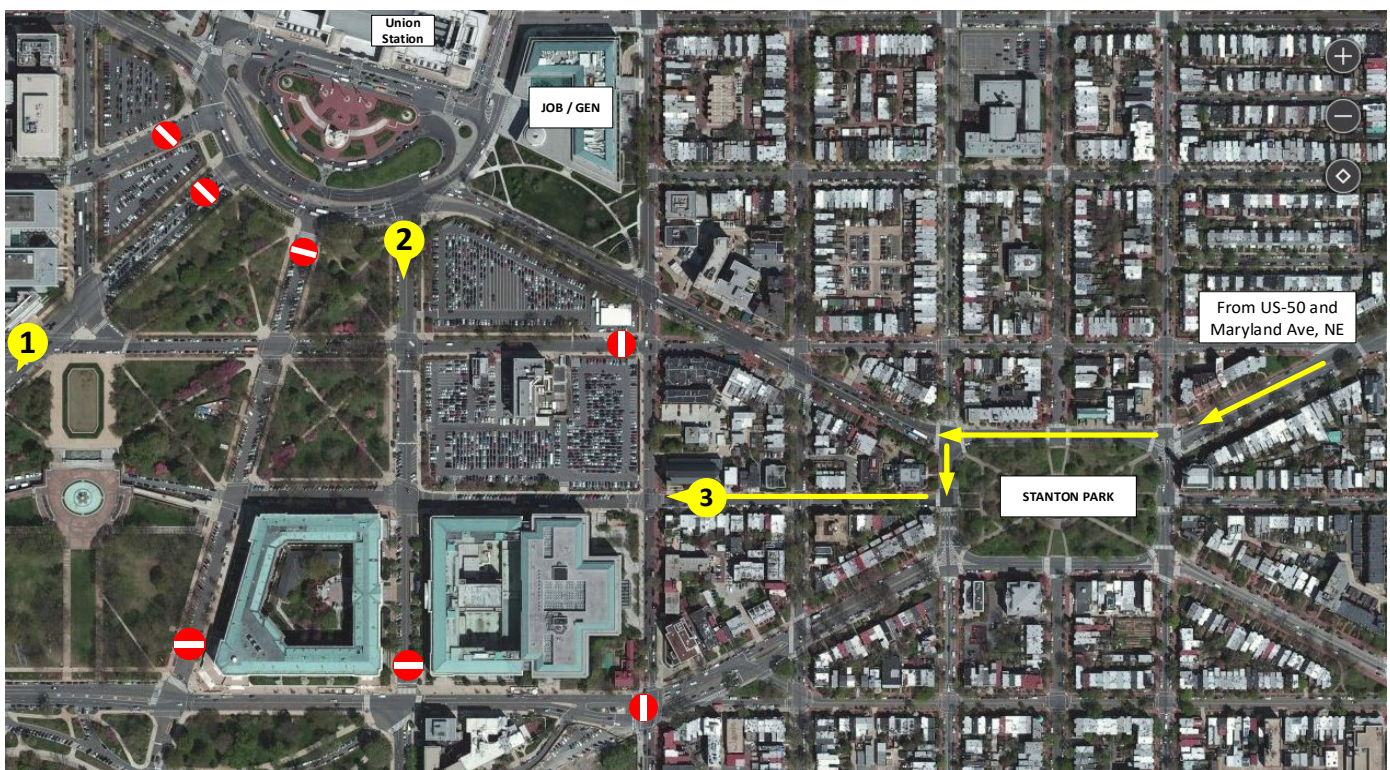
#### Vehicle Access Point: **# 3 - C St., NE at Second St., NE**

- From Baltimore-Washington Parkway Southbound
- **RIGHT** 2 Lanes onto US-50 WEST (New York Ave.)
- **LEFT** onto Bladensburg Road, NE (Traffic Signal / Exxon Station)
- **BEAR RIGHT** onto Maryland Ave., NE (Follow to Stanton Park- See Map)
- **STRAIGHT** onto C St., NE
- **LEFT** onto 4<sup>th</sup> St., NE
- **RIGHT** onto C St., NE

Vehicle Access point will be after you cross over C St., NE.

#### NOTES:

- Please follow the instruction of law enforcement and military personnel as you get closer to the U.S. Capitol for additional direction.
- Please have your staff ID readily available and ensure your vehicle has the required parking permit.
- Please allow additional travel time due to the anticipated volume of attendees for this historic event.
- Additional road closures possible due to safety concerns.





# 60th Presidential Inauguration

January 20, 2025



## Routes to Vehicle Access Points (VAP)

**SENATE Vehicle Access Point: FROM I-295 NORTH / Points South & East**

**Vehicle Access Point: #1 - Louisiana Ave., NW at D St., NW**

- CONTINUE onto I-295
- TAKE exit 1D 8<sup>th</sup> St SE from I-695
- MERGE onto I St., SE
- TAKE 6<sup>th</sup> St., SE to C St., NE
- LEFT onto C St., NE
- RIGHT onto Massachusetts Ave., NE
- LEFT onto North Capitol St., NW
- RIGHT onto Louisiana Ave., NW

Vehicle Access point is Louisiana Ave., NW when you cross over D St., NW.

### NOTES:

- Please follow the instruction of law enforcement and military personnel as you get closer to the U.S. Capitol for additional direction.
- Please have your staff ID readily available and ensure your vehicle has the required parking permit.
- Please allow additional travel time due to the anticipated volume of attendees for this historic event.
- Additional road closures possible due to safety concerns.





# 60th Presidential Inauguration

January 20, 2025



## Routes to Vehicle Access Points (VAP)

**SENATE Vehicle Access Point: FROM I-295 NORTH / Points South & East**

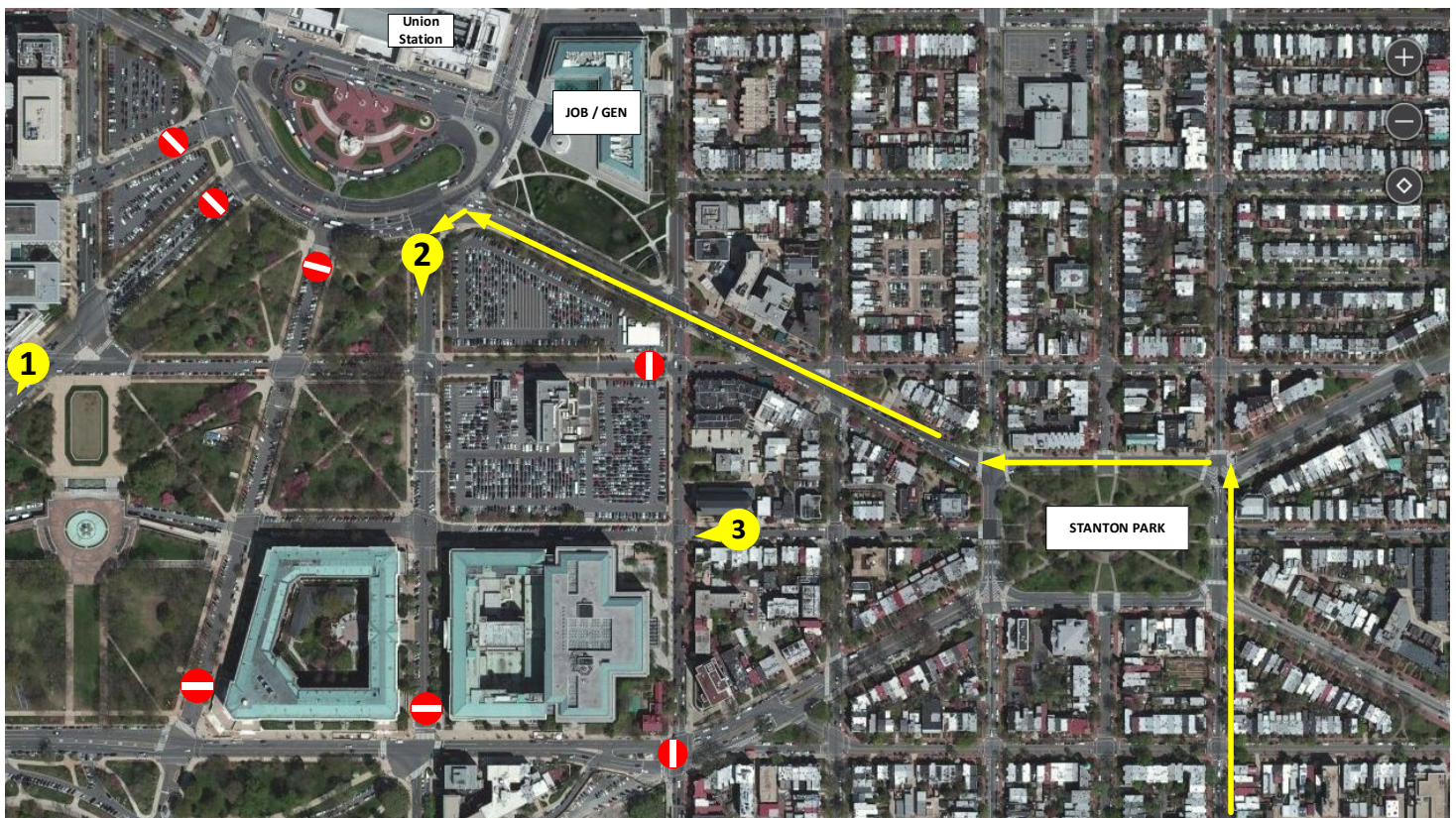
**Vehicle Access Point: #2 - First St., NE at Columbus Circle, NE**

- CONTINUE onto I-295
- TAKE exit 1D 8<sup>th</sup> St., SE from I-695
- MERGE onto I St., SE
- TAKE 6<sup>th</sup> St., SE to C St., NE
- LEFT onto C St., NE
- RIGHT onto Massachusetts Ave., NE
- LEFT onto First St., NE

Vehicle Access point is at the corner of First and Columbus Ave., NE.

### NOTES:

- Please follow the instruction of law enforcement and military personnel as you get closer to the U.S. Capitol for additional direction.
- Please have your staff ID readily available and ensure your vehicle has the required parking permit.
- Please allow additional travel time due to the anticipated volume of attendees for this historic event.
- Additional road closures possible due to safety concerns.





# 60th Presidential Inauguration

January 20, 2025



## Routes to Vehicle Access Points (VAP)

**SENATE Vehicle Access Point: FROM I-295 NORTH / Points South & East**

**Vehicle Access Point: # 3 - C St., NE at 2nd St., NE**

- **CONTINUE** onto I-295
- **TAKE** exit 1D 8<sup>th</sup> St., SE from I-695
- **MERGE** onto I St., SE
- **TAKE** 6<sup>th</sup> St., SE to C St., NE
- **LEFT** onto C St., NE
- **LEFT** onto 4<sup>th</sup> St., NE
- **RIGHT** onto C St., NE

Vehicle Access point is located on C St., NE before 2<sup>nd</sup> St., NE.

### NOTES:

- Please follow the instruction of law enforcement and military personnel as you get closer to the U.S. Capitol for additional direction.
- Please have your staff ID readily available and ensure your vehicle has the required parking permit.
- Please allow additional travel time due to the anticipated volume of attendees for this historic event.
- Additional road closures possible due to safety concerns.



# 60th Presidential Inauguration

January 20, 2025

## Routes to Vehicle Access Points (VAP)



Senate Vehicle Access Point: **FROM I-395 NORTH / South of DC**

Vehicle Access Point: **#1 - Louisiana Ave., NW at D St., NW**

- Take the exit onto I-395 N toward Washington
- **RIGHT** to stay on I-395 N
- **Left** at the fork to continue onto I-695
- **TAKE** the 6th St., SE exit toward Navy Yard
- **LEFT** onto 6th St., SE
- **LEFT** onto C St., NE
- **RIGHT** onto Massachusetts Ave., NE
- **LEFT** onto E St., NE
- **LEFT** onto North Capitol St., NE
- **RIGHT** onto Louisiana Ave., NW

Vehicle Access point is Louisiana Ave., NW when you cross over D St., NW.

### NOTES:

- Please follow the instruction of law enforcement and military personnel as you get closer to the U.S. Capitol for additional direction.
- Please have your staff ID readily available and ensure your vehicle has the required parking permit.
- Please allow additional travel time due to the anticipated volume of attendees for this historic event.
- Additional road closures possible due to safety concerns.





# 60th Presidential Inauguration

January 20, 2025

## Routes to Vehicle Access Points (VAP)



Senate Vehicle Access Point: **FROM I-395 NORTH / South of DC**

Vehicle Access Point: **#2 - First St., NE at Columbus Circle, NE**

- TAKE the exit onto I-395 N toward Washington
- RIGHT to stay on I-395 N
- LEFT at the fork to continue onto I-695
- TAKE the 6th St., SE exit toward Navy Yard
- LEFT onto 6th St., SE
- LEFT onto C St., NE
- RIGHT onto Massachusetts Ave., NE
- LEFT onto First St., NE

Vehicle Access point is located at First St. and Columbus Circle, NE

### NOTES:

- Please follow the instruction of law enforcement and military personnel as you get closer to the U.S. Capitol for additional direction.
- Please have your staff ID readily available and ensure your vehicle has the required parking permit.
- Please allow additional travel time due to the anticipated volume of attendees for this historic event.
- Additional road closures possible due to safety concerns.





# 60th Presidential Inauguration

January 20, 2025



## Routes to Vehicle Access Points (VAP)

Senate Vehicle Access Point: **FROM I-395 NORTH / South of DC**  
Vehicle Access Point: **# 3 - C St, NE at Second St, NE**

- **TAKE** the exit onto I-395 N toward Washington
- **KEEP RIGHT** to stay on I-395 N
- **LEFT** at the fork to continue onto I-695
- **TAKE** the 6th St., SE exit toward Navy Yard
- **LEFT** onto 6th St., SE
- **LEFT** onto C St., NE
- **LEFT** onto 4th St., NE
- **RIGHT** onto C St., NE

Vehicle Access point is located on C St., NE before 2<sup>nd</sup> St., NE.

### NOTES:

- Please follow the instruction of law enforcement and military personnel as you get closer to the U.S. Capitol for additional direction.
- Please have your staff ID readily available and ensure your vehicle has the required parking permit.
- Please allow additional travel time due to the anticipated volume of attendees for this historic event.
- Additional road closures possible due to safety concerns.



# 60th Presidential Inauguration

January 20, 2025

## Routes to Vehicle Access Points (VAP)



**SENATE Vehicle Access Point: FROM I-66 / West of DC**

**Vehicle Access Point: #1 Louisiana Ave., NW at D St., NW**

- **HEAD** east on I-66 E
- **TAKE** Interstate 66E exit toward E St towards Whitehurst Fwy
- **CONTINUE** of I-66
- **TAKE** exit towards Rock Creek Pkwy
- **RIGHT** at the fork to continue onto 27<sup>th</sup> St., NW (towards Kennedy Center)
- **RIGHT** onto K St., NW
- **LEFT** onto 11th St., N.W.
- **RIGHT** onto Rhode Island Ave., NW
- **RIGHT** onto North Capitol St., NW
- **RIGHT** onto Louisiana Ave., NW

Vehicle Access point is located after crossing over D St., NW.

### NOTES:

- Please follow the instruction of law enforcement and military personnel as you get closer to the U.S. Capitol for additional direction.
- Please have your staff ID readily available and ensure your vehicle has the required parking permit.
- Please allow additional travel time due to the anticipated volume of attendees for this historic event.
- Additional road closures possible due to safety concerns.



# 60th Presidential Inauguration

January 20, 2025

## Routes to Vehicle Access Points (VAP)



**SENATE Vehicle Access Point: FROM I-66 / West of DC**

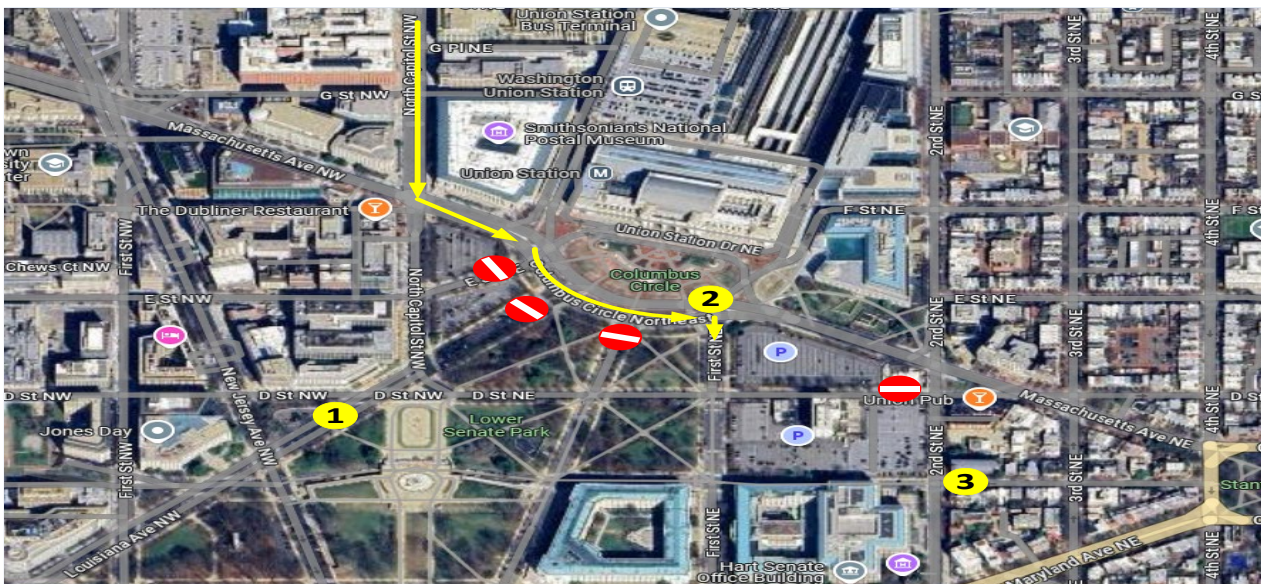
**Vehicle Access Point: # 2- First St., NE at Columbus Circle, NE**

- **HEAD** east on I-66
- **TAKE** 66E exit toward E St. towards Whitehurst Fwy
- **CONTINUE** of I-66
- **TAKE** exit towards Rock Creek Pkwy
- **RIGHT** at the fork to continue onto 27<sup>th</sup> St., NW (towards Kennedy Center)
- **RIGHT** onto K St., NW
- **LEFT** onto 11th St., NW
- **RIGHT** onto Rhode Island Ave., NW
- **RIGHT** onto North Capitol St., NW
- **LEFT** on Massachusetts Ave., NE
- **RIGHT** onto First St., NE

Vehicle Access point is located at the corner of First and Columbus St, NE.

### NOTES:

- Please follow the instruction of law enforcement and military personnel as you get closer to the U.S. Capitol for additional direction.
- Please have your staff ID readily available and ensure your vehicle has the required parking permit.
- Please allow additional travel time due to the anticipated volume of attendees for this historic event.
- Additional road closures possible due to safety concerns.



# 60th Presidential Inauguration

January 20, 2025

## Routes to Vehicle Access Points (VAP)



### SENATE Vehicle Access Point: **FROM I-66 / West of DC**

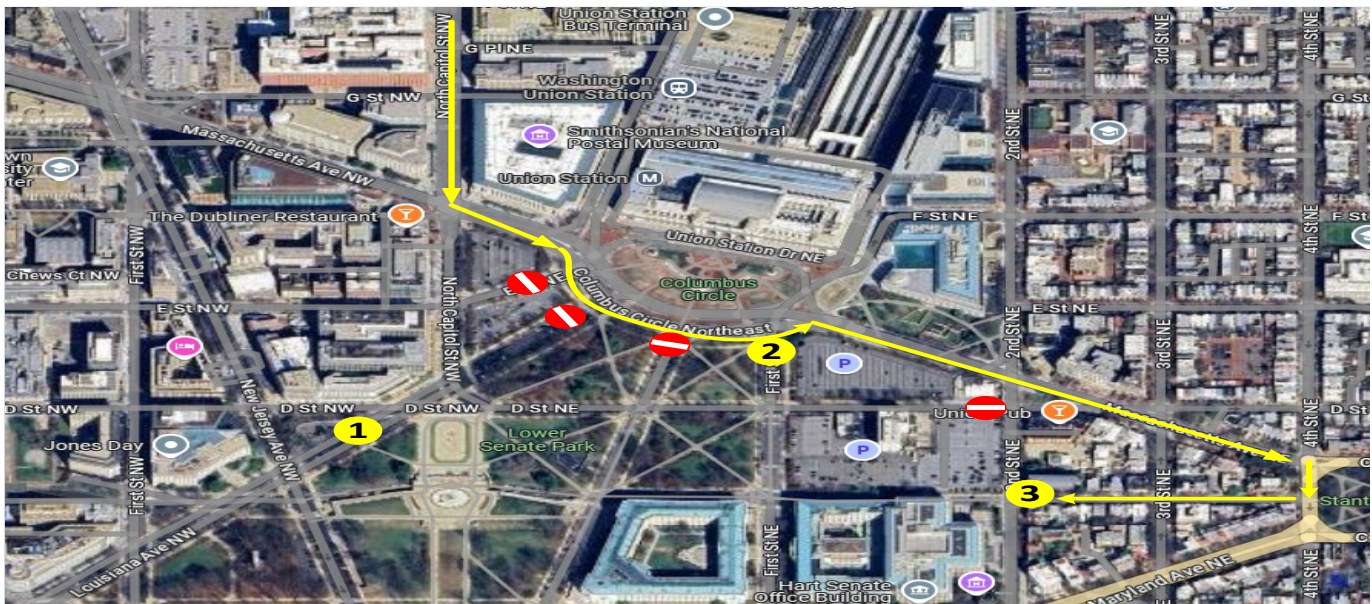
Vehicle Access Point: **#3 - C St., NE at 2nd St., NE**

- **HEAD** east on I-66 E
- **TAKE** Interstate 66E exit toward E St., towards Whitehurst Fwy
- **CONTINUE** of I-66
- **TAKE** exit towards Rock Creek Pkwy
- **RIGHT** at the fork to continue onto 27<sup>th</sup> St., NW (towards Kennedy Center)
- **RIGHT** onto K St., NW
- **LEFT** onto 11<sup>th</sup> St., NW
- **RIGHT** onto Rhode Island Ave., NW
- **RIGHT** onto North Capitol St., NW
- **LEFT** onto Massachusetts Ave., NE
- **RIGHT** onto 4<sup>th</sup> St., NE
- **RIGHT** onto C St., NE
- **CONTINUE** to 2<sup>nd</sup> St., NE

Vehicle Access point is located after crossing over 2<sup>nd</sup> St., NE.

#### NOTES:

- Please follow the instruction of law enforcement and military personnel as you get closer to the U.S. Capitol for additional direction.
- Please have your staff ID readily available and ensure your vehicle has the required parking permit.
- Please allow additional travel time due to the anticipated volume of attendees for this historic event.
- Additional road closures possible due to safety concerns.



# 60th Presidential Inauguration

January 20, 2025

## Routes to Vehicle Access Points (VAP)



### HOUSE/LIBRARY Vehicle Access Point: **FROM I-66 or Points WEST**

Vehicle Access Point: **#4 - 2nd St., SE at C St., SE**

- I-66 East from Virginia
- **RIGHT- EXIT 75** for Ramp to 110 South (*Towards I-395 / Pentagon*)
- **RIGHT** onto Ramp for I-395 Northbound (*Pass over Potomac*)
- **RIGHT LANES- EXIT 1 B** to 6<sup>th</sup> St, SE (*6th St. heads north only*)
- **LEFT** onto D St., SE
- **RIGHT** onto 2<sup>nd</sup> St., SE

Vehicle Access Point will be on the corner of C St., SE and 2<sup>nd</sup> St., SE.

#### NOTES:

- Please follow the instruction of law enforcement and military personnel as you get closer to the U.S. Capitol for additional direction.
- Please have your staff ID readily available and ensure your vehicle has the required parking permit.
- Please allow additional travel time due to the anticipated volume of attendees for this historic event.
- Additional road closures possible due to safety concerns.



# 60th Presidential Inauguration

January 20, 2025

## Routes to Vehicle Access Points (VAP)



**HOUSE Vehicle Access Point: FROM I-66 or Points WEST**

Vehicle Access Point: **#5 - New Jersey Ave., SE at D St., SE**

- I-66 East from Virginia
- **RIGHT- EXIT 75** for Ramp to 110 South (*Towards I-395 / Pentagon*)
- **RIGHT** onto Ramp for I-395 Northbound (*Pass over Potomac*)
- **CONTINUE** onto I-695 EAST from I-395 (Past Exit 2B / I-395 N / 3<sup>rd</sup> St. Tunnel)
- **RIGHT- EXIT 1A** onto ramp for South Capitol St.
- **STRAIGHT** off ramp through 1 traffic signal (I St., SW)
- **RIGHT** onto Ramp for M St., SW (Before Underpass)
- **LEFT** onto M St., SW
- **LEFT** onto New Jersey Ave., SE

Vehicle Access Point will be across D St., SW on New Jersey Ave., SE.

### NOTES:

- Please follow the instruction of law enforcement and military personnel as you get closer to the U.S. Capitol for additional direction.
- Please have your staff ID readily available and ensure your vehicle has the required parking permit.
- Please allow additional travel time due to the anticipated volume of attendees for this historic event.
- Additional road closures possible due to safety concerns.



# 60th Presidential Inauguration

January 20, 2025

## Routes to Vehicle Access Points (VAP)



**HOUSE Vehicle Access Point: FROM I-66 or Points WEST**

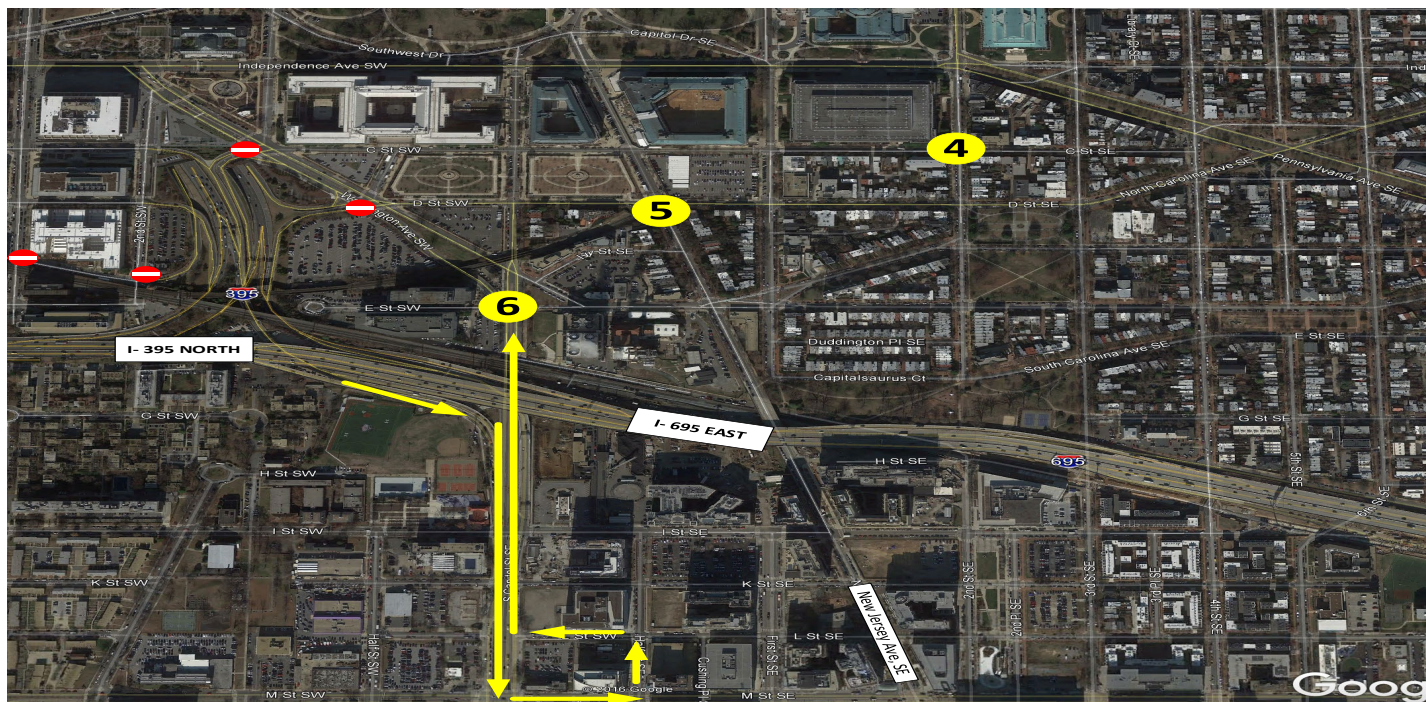
**Vehicle Access Point: #6 - South Capitol St., SE/SW at D St., SE/SW**

- I-66 East from Virginia
- **RIGHT- EXIT 75** for Ramp to 110 South (*Towards I-395 / Pentagon*)
- **RIGHT** onto Ramp for I-395 Northbound (*Pass over Potomac*)
- **RIGHT- Exit 1A** South Capitol St./National Park
- **LEFT** onto M St., SE
- **LEFT** onto Half St., SE
- **RIGHT** onto South Capitol St.
- **MERGE FAR LEFT** onto South Capitol St., SE and continue to VAP

Vehicle Access Point will be as you cross D St., SE on South Capitol St., SE.

### NOTES:

- Please follow the instruction of law enforcement and military personnel as you get closer to the U.S. Capitol for additional direction.
- Please have your staff ID readily available and ensure your vehicle has the required parking permit.
- Please allow additional travel time due to the anticipated volume of attendees for this historic event.
- Additional road closures possible due to safety concerns.







# 60th Presidential Inauguration

## January 20, 2025



### Routes to Vehicle Access Points (VAP)

**HOUSE/LIBRARY Vehicle Access Point: FROM I-395 NORTH / SOUTH of DC**  
Vehicle Access Point: **#4 - 2<sup>nd</sup> St., SE at C St., SE**

- I-395 NORTH OVER the Potomac River
- **RIGHT LANE-** Exit 1B onto 6<sup>th</sup> St., SE (6<sup>th</sup> St. is one way, stay on 6<sup>th</sup> St.)
- **LEFT** onto South Carolina Ave./E St., SE (in the park on your Left)
- **RIGHT** onto 2nd St., SE
- 

Vehicle Access Point will be at the end of First St., SE.

#### NOTES:

- the Please follow the instruction of law enforcement and military personnel as you get closer to the U.S. Capitol for additional direction.
- Please have your staff ID readily available and ensure your vehicle has the required parking permit.
- Please allow additional travel time due to the anticipated volume of attendees for this historic event.
- Additional road closures possible due to safety concerns.



# 60th Presidential Inauguration

January 20, 2025

## Routes to Vehicle Access Points (VAP)



**HOUSE Vehicle Access Point: FROM I-395 NORTH / SOUTH of DC**

**Vehicle Access Point: #5 - New Jersey Ave., SE at D St., SE**

- **I-395 NORTH** OVER the Potomac River
- on I-695 EAST from I-395 (Past Exit 2B / I-395 N / Third St. Tunnel)
- **RIGHT** onto ramp for EXIT 1 A / South Capitol St./Nationals Park
- **STRAIGHT** off ramp through 1 traffic signal (I St., SW)
- **BEAR RIGHT** onto Ramp for M St., SW
- **LEFT** onto M St., SE
- **LEFT** onto New Jersey Ave., SE

Vehicle Access Point will be across D St., SE on New Jersey Ave., SE

### NOTES:

- Please follow the instruction of law enforcement and military personnel as you get closer to the Capitol for additional direction
- Please have your staff ID readily available and ensure your vehicle has the required parking permit
- Please allow additional travel time due to the anticipated volume of attendees for this historic event
- Additional road closures possible due to safety concerns



# 60th Presidential Inauguration

January 20, 2025

## Routes to Vehicle Access Points (VAP)



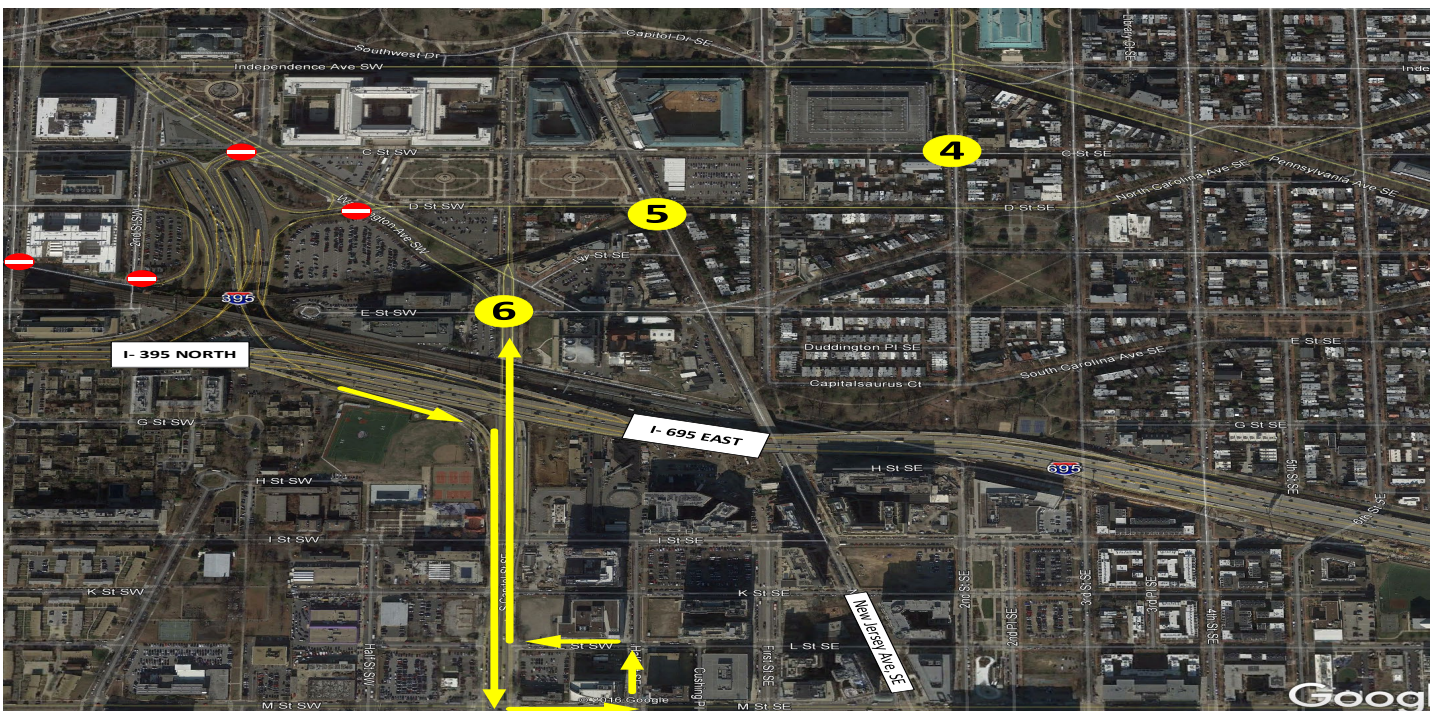
**HOUSE Vehicle Access Point: FROM I-395 NORTH / SOUTH of DC**

**Vehicle Access Point: #6 - South Capitol St., SE/SW at D St., SE/SW**

- I-395 NORTH OVER the Potomac River
- RIGHT- Exit 1A South Capitol St/Nationals Park
- LEFT onto M St., SE
- LEFT onto Half St., SE
- Left onto L St., SE
- MERGE FAR LEFT onto South Capitol St., SE and continue to VAP

### NOTES:

- Please follow the instruction of law enforcement and military personnel as you get closer to the Capitol for additional direction
- Please have your staff ID readily available and ensure your vehicle has the required parking permit
- Please allow additional travel time due to the anticipated volume of attendees for this historic event
- Additional road closures possible due to safety concerns



# 60th Presidential Inauguration

January 20, 2025

## Routes to Vehicle Access Points (VAP)



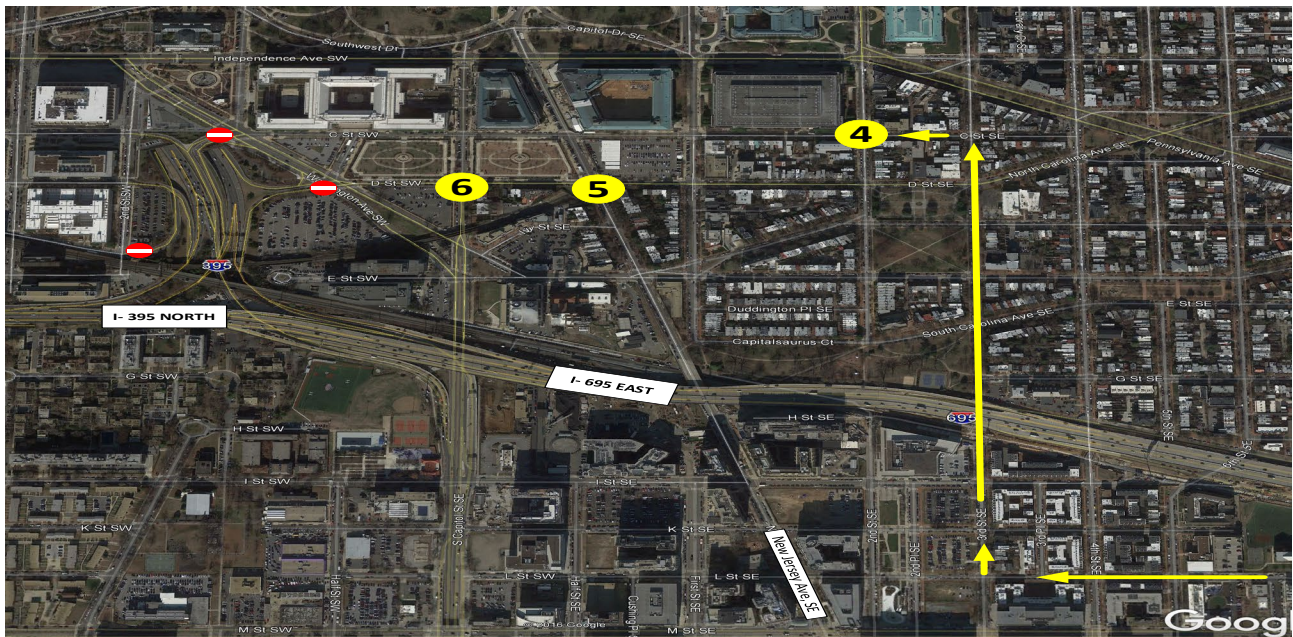
**HOUSE/LIBRARY Vehicle Access Point: FROM I-295 SOUTH / Points South & East**  
Vehicle Access Point: **#4 - 2<sup>nd</sup> St., SE at C St., SE**

- **CONTINUE** onto I-295 Southbound
- **RIGHT- EXIT 1C** onto Ramp for I-695
- **RIGHT- EXIT 2** for M St., SE & Navy Yard
- **LEFT** onto M St., SE
- **RIGHT** onto 3<sup>rd</sup> St., SE
- **LEFT** onto C St., SE
- **CONTINUE STRAIGHT** to Vehicle Access Point

Vehicle Access Point will be on 2nd St., SE at D St., SE.

### NOTES:

- Please follow the instruction of law enforcement and military personnel as you get closer to the U.S. Capitol for additional direction.
- Please have your staff ID readily available and ensure your vehicle has the required parking permit.
- Please allow additional travel time due to the anticipated volume of attendees for this historic event.
- Additional road closures possible due to safety concerns.



# 60th Presidential Inauguration

January 20, 2025

## Routes to Access Points (VAP)



**HOUSE/LIBRARY Vehicle Access Point: FROM I-295 SOUTH / Points North & East**

**Vehicle Access Point: #4 - 2<sup>nd</sup> St., SE at C St., SE**

- **PROCEED PAST** US-50 WEST onto I-295 SOUTH
- **RIGHT EXIT** for East Capitol St. (Right Lane Exit Only for East Capitol St. past River Terrace)
- **CONTINUE RIGHT** 3 LANES around RFK Stadium onto C St., NE
- **BEAR LEFT** onto North Carolina Ave., NE (After 17<sup>th</sup> St., NE)
- Becomes East Capitol St. at Lincoln Park
- **LEFT** onto 11<sup>th</sup> S.t, SE
- **RIGHT** onto North Carolina Ave., SE (Follow PAST Eastern Market)
- North Carolina becomes D. S.t, SE
- **RIGHT** onto 2<sup>nd</sup> S.t, SE
- **LEFT** onto C St., SE

Vehicle Access Point will be on C St., SE at 2nd St., SE.

### NOTES:

- Please follow the instruction of law enforcement and military personnel as you get closer to the U.S. Capitol for additional direction.
- Please have your staff ID readily available and ensure your vehicle has the required parking permit.
- Please allow additional travel time due to the anticipated volume of attendees for this historic event.
- Additional road closures possible due to safety concerns.



# 60th Presidential Inauguration

January 20, 2025

## Routes to Vehicle Access Points (VAP)



**HOUSE Vehicle Access Point: FROM I-295 SOUTH / Points South & East**

Vehicle Access Point: **#5 - New Jersey Ave., SE at D St., SE**

- **CONTINUE** onto I-295 Southbound
- **RIGHT- EXIT 1C** onto Ramp for I-695
- **RIGHT- EXIT 2** for M St., SE & Navy Yard
- **LEFT** onto M St., SE
- **RIGHT** onto New Jersey Ave., SE (Navy Yard Metro Station)
- **Continue Straight** to Vehicle Access Point

Vehicle Access Point will be on C St., SE at Second St., SE.

### NOTES:

- Please follow the instruction of law enforcement and military personnel as you get closer to the U.S. Capitol for additional direction.
- Please have your staff ID readily available and ensure your vehicle has the required parking permit.
- Please allow additional travel time due to the anticipated volume of attendees for this historic event.
- Additional road closures possible due to safety concerns.



# 60th Presidential Inauguration

January 20, 2025

## Routes to Vehicle Access Points (VAP)



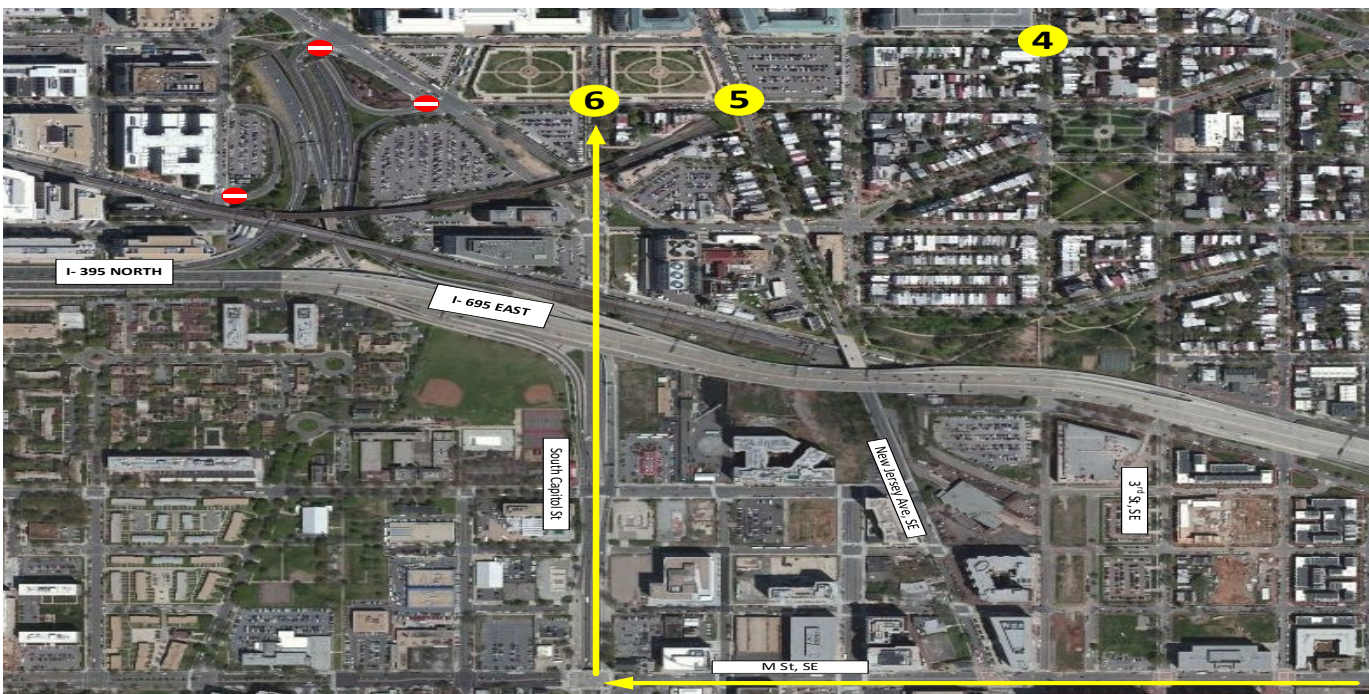
**HOUSE Vehicle Access Point: FROM I-295 SOUTH / Points South & East**  
Vehicle Access Point: **#6 - South Capitol St., SE/SW at D St., SE/SW**

- **CONTINUE** on I-295 Southbound
- **RIGHT- EXIT 1C** onto Ramp for I-695
- **RIGHT- EXIT 2** for M St., SE & Navy Yard
- **LEFT** onto M St., SE
- **RIGHT-** onto South Capitol St., SE
- **MERGE FAR LEFT** onto South Capitol St., SE (Pass over I St, SE/SW / Under highway)
- **Continue Straight** to Vehicle Access Point

Vehicle Access Point will be on South Capitol St. at D St., SE.

### NOTES:

- Please follow the instruction of law enforcement and military personnel as you get closer to the U.S. Capitol for additional direction.
- Please have your staff ID readily available and ensure your vehicle has the required parking permit.
- Please allow additional travel time due to the anticipated volume of attendees for this historic event.
- Additional road closures possible due to safety concerns.





# 60th Presidential Inauguration

January 20, 2025

## Routes to Vehicle Access Points (VAP)



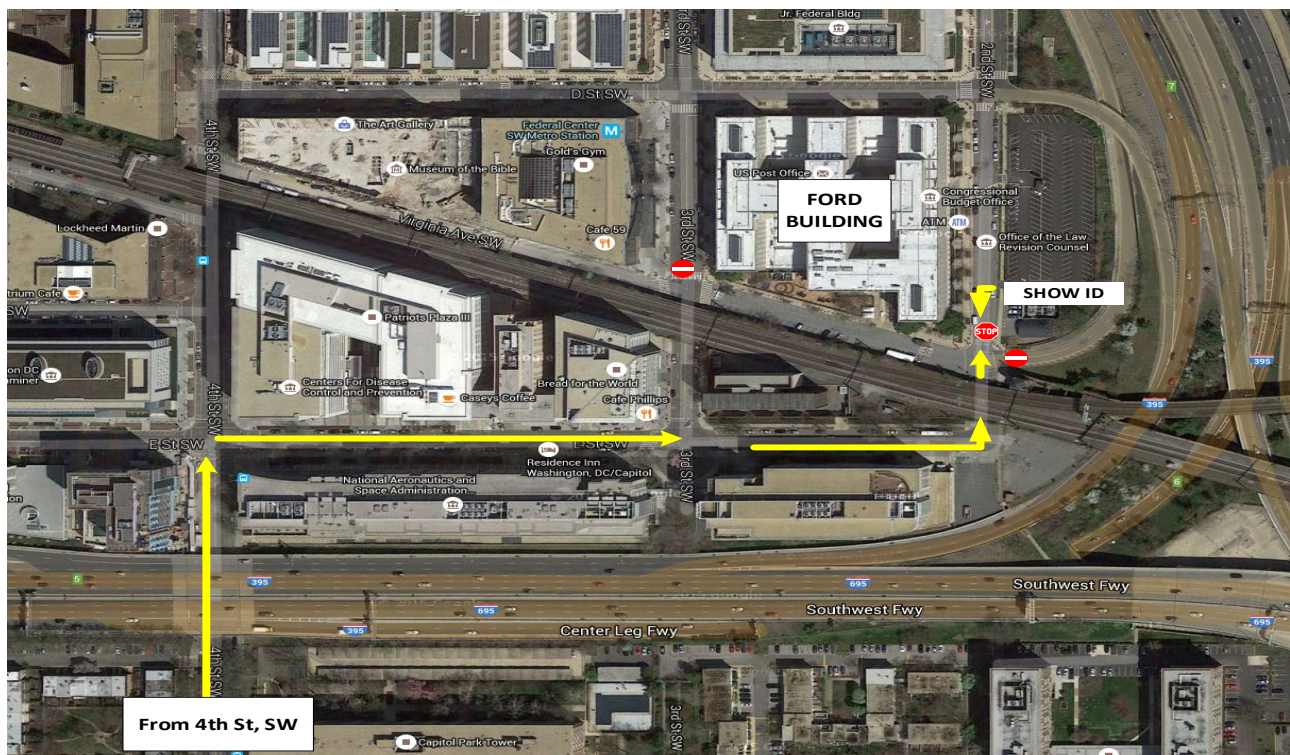
House Ford Office Building Access: **FROM I-66 AND I-395 NORTH/Points SOUTH & WEST**

- I-395 NORTH OVER the Potomac River
- **RIGHT**- Exit 1A South Capitol St/Nationals Park
- **RIGHT** onto I St. SW
- **RIGHT** onto 4<sup>th</sup> St., SW (Waterfront Metro Station)
- **RIGHT** onto E St., SW
- **LEFT** onto 2<sup>nd</sup> St., SW

**\*\*Vehicle Access Point will be on Virginia Ave, SW at Second Street\*\***

### NOTES:

- Please follow the instruction of law enforcement and military personnel as you get closer to the U.S. Capitol for additional direction.
- Please have your staff ID readily available and ensure your vehicle has the required parking permit.
- Please allow additional travel time due to the anticipated volume of attendees for this historic event.
- Additional road closures possible due to safety concerns.





# 60th Presidential Inauguration

January 20, 2025

## Routes to Vehicle Access Points (VAP)

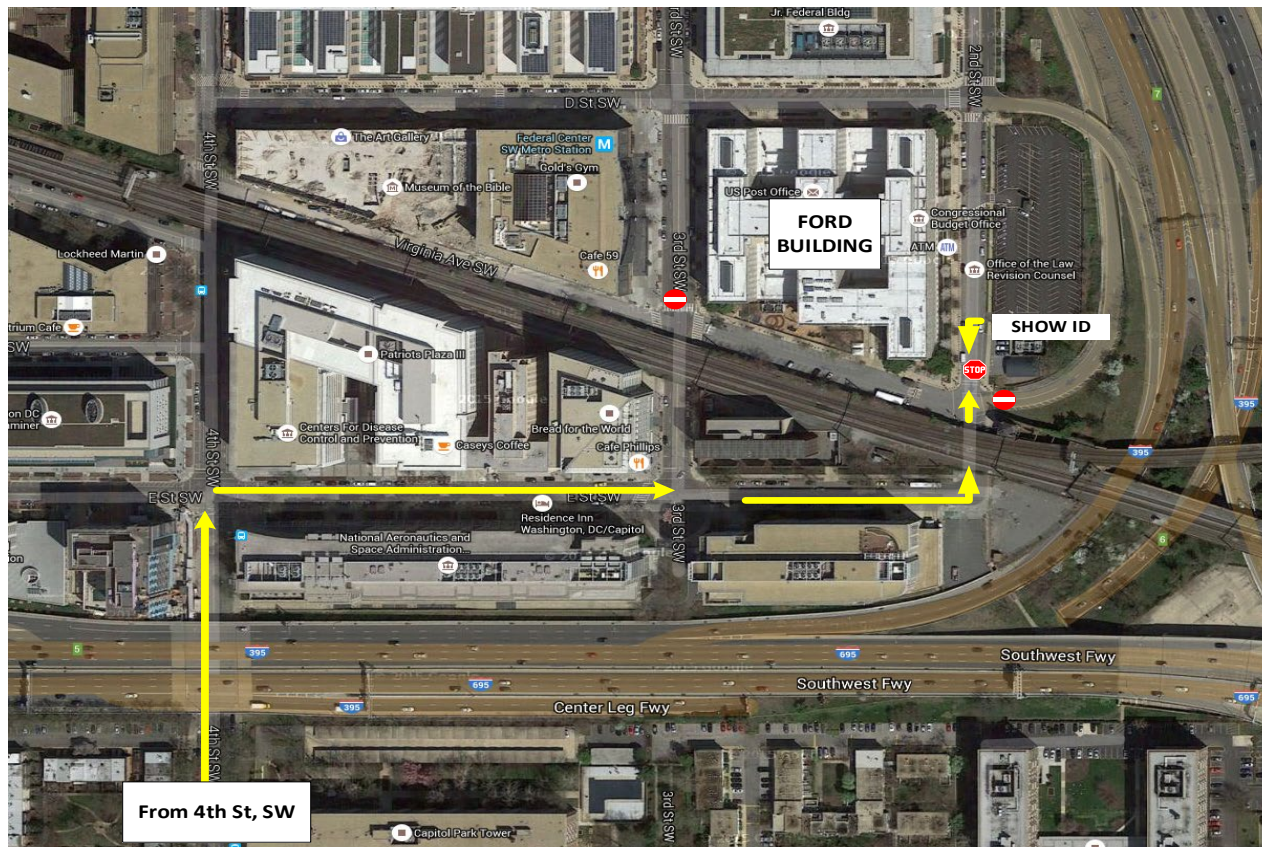


### House Ford Office Building Access: **FROM I-295 NORTH / Points South & East**

- CONTINUE on I-295 Northbound
- RIGHT- EXIT 3B onto Ramp for South Capitol St., SW
- STRAIGHT over South Capitol Street Bridge
- RIGHT onto Ramp for M St., SW
- LEFT onto M St., SW
- RIGHT onto 4<sup>th</sup> St., SW (Waterfront Metro Station)
- RIGHT onto E St., SW
- LEFT onto 2<sup>nd</sup> St., SW

**\*\*Vehicle Access Point will be on Virginia Ave, SW at Second Street\*\***

**NOTE:** Please have your ID readily available to show officers at block vehicles to gain access.



# 60th Presidential Inauguration

January 20, 2025

## Routes to Vehicle Access Points (VAP)



### House Ford Office Building Access:

#### **FROM BW Parkway / I-295 SOUTH / Points North & East**

- **CONTINUE** on I-295 SOUTH
- **RIGHT- EXIT 1C** onto Ramp for I-695 WEST
- **RIGHT- EXIT 2-** M St., SE & Navy Yard
- **LEFT** onto M St., SE
- Cross **OVER** South Capitol St.
- **RIGHT** onto 4<sup>th</sup> St., SW (Waterfront Metro Station)
- **RIGHT** onto E St., SW
- **LEFT** onto 2<sup>nd</sup> St., SW

**\*\*Vehicle Access Point will be on Virginia Ave, SW at Second Street \*\***

**NOTE:** Please have your ID readily available to show officers at block vehicles to gain access.

